

THE WEDDING OF YOUR DREAMS



THE WEDDING OF YOUR DREAMS



ABOUT

The Oasis at Death Valley is a true American oasis which consists of the historic AAA Four Diamond Inn at Death Valley and the family oriented Ranch at Death Valley. With towering palm trees, Bermuda grass lawns, and a constant source of natural spring water, the Oasis at Death Valley is surrounded by the spectacular beauty of Death Valley National Park. With 3.4 million acres of diverse geological terrain consisting of arid low desert (282 ft. below sea level – lowest point in North America) and 5,000- to 11,000- feet tall mountain ranges, this resort offers a one-of-a-kind lodging experience.

The Oasis at Death Valley features spring-fed swimming pools, an 18-hole golf course (world's lowest elevation golf course – we guarantee your lowest round ever!) and adventure excursions offered seasonally (October – early May) by the Furnace Creek Stables and Farabee Jeep Rentals and Tours. While daytime activities are filled with exploring canyons, ghost towns, sand dunes, and local wildlife, the evening skies are equally impressive. Designated as one of the few Gold Tier “International Dark Sky Parks” in the world.

CONTACT INFORMATION

760-786-3354



THE WEDDING OF YOUR DREAMS

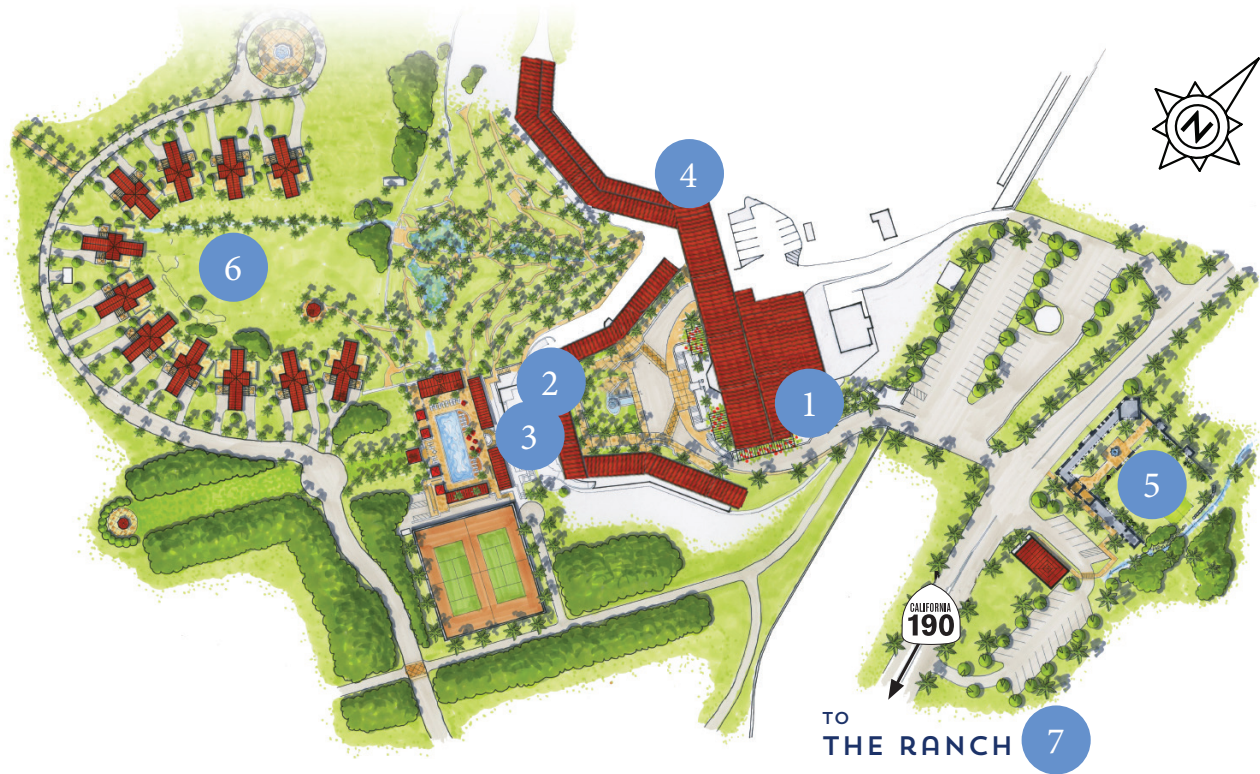
MAP KEY

1. Oasis Complex

2. Gold Rush Room
3. Panamint Deck

4. Stargazer's Terrace
5. Mission Gardens

6. Casita Lawn
7. Wildrose Hall
(at The Ranch)



SPECIFICATIONS:

VENUE	SQ. FEET	CAPACITY							
		DIMENSIONS	CLASSROOM	BOARDROOM	SQUARE	U-SHAPE	ROUNDS	THEATER	RECEPTION
The Oasis Complex	2,179	–	–	–	–	–	–	–	–
The Oasis Room	995	36'-6" x 27'-3"*	21	34	28	23	81	105	110
The Bighorn Room	480	19' x 24'-1"	36	16	13	15	42	50	50
The Foyer	704	20'-6" x 34'-4"	n/a	n/a	n/a	n/a	n/a	n/a	70
The Gold Rush Room	1,400	25'-2" x 55'-7"***	n/a	28	n/a	n/a	n/a	n/a	100
The Panamint Deck	1,944	35'-6" x 54'-9"	n/a	n/a	n/a	n/a	75	n/a	100
Stargazer's Terrace	1,467	36'-5" x 41'-5"	n/a	n/a	n/a	n/a	50	70	50
Mission Gardens (Full Space)	12,675	107'-5" x 118'	n/a	n/a	n/a	n/a	300	n/a	500
Mission Gardens (Lawn)	4,286	75'-1" x 57'-1"	n/a	n/a	96	n/a	270	n/a	460
Casita Lawn	40,000	–	n/a	n/a	n/a	n/a	600	n/a	900
Wildrose Hall	940	13'-5" x 70'	180	65	80	65	180	275	350

* please note south wall is 27'-1", as the room is not a true rectangle.
** alcoves are approximately 14' deep

CONTACT INFORMATION

760-786-3354



EVENT VENUES AT THE INN - THE OASIS ROOM COMPLEX



The Oasis Room

THE OASIS ROOM COMPLEX

Located under the lobby bar at the Inn at Death Valley, the Oasis Room Complex is the a series of three connecting rooms that can be used collectively or independently. The complex features the Oasis Room, Big Horn Room, and the Foyer.

The Oasis Room's large picture windows look out to the Funeral Mountains and the valley beyond. The complex originally designed (in the 1930s) as a bar and restaurant, and is built with locally – sourced resources, including the stones from local quarries and refurnished railroad ties from the Tonopah & Tidewater railway line. The Big Horn room is named for the 1938 Barse Miller Mural “Will He Make It?” hangs on one of the walls. This room features a tunnel entrance, for easy access from the front of the property. The Foyer is built directly into the mountain with pockets of glistening borax-infused rock and connects the Big Horn and Oasis rooms.

The Oasis Complex is an ideal space for banquet up to 80 people, cocktail parties, meetings, and small indoor ceremonies.

CONTACT INFORMATION

760-786-3354

oasisatdeathvalley.com



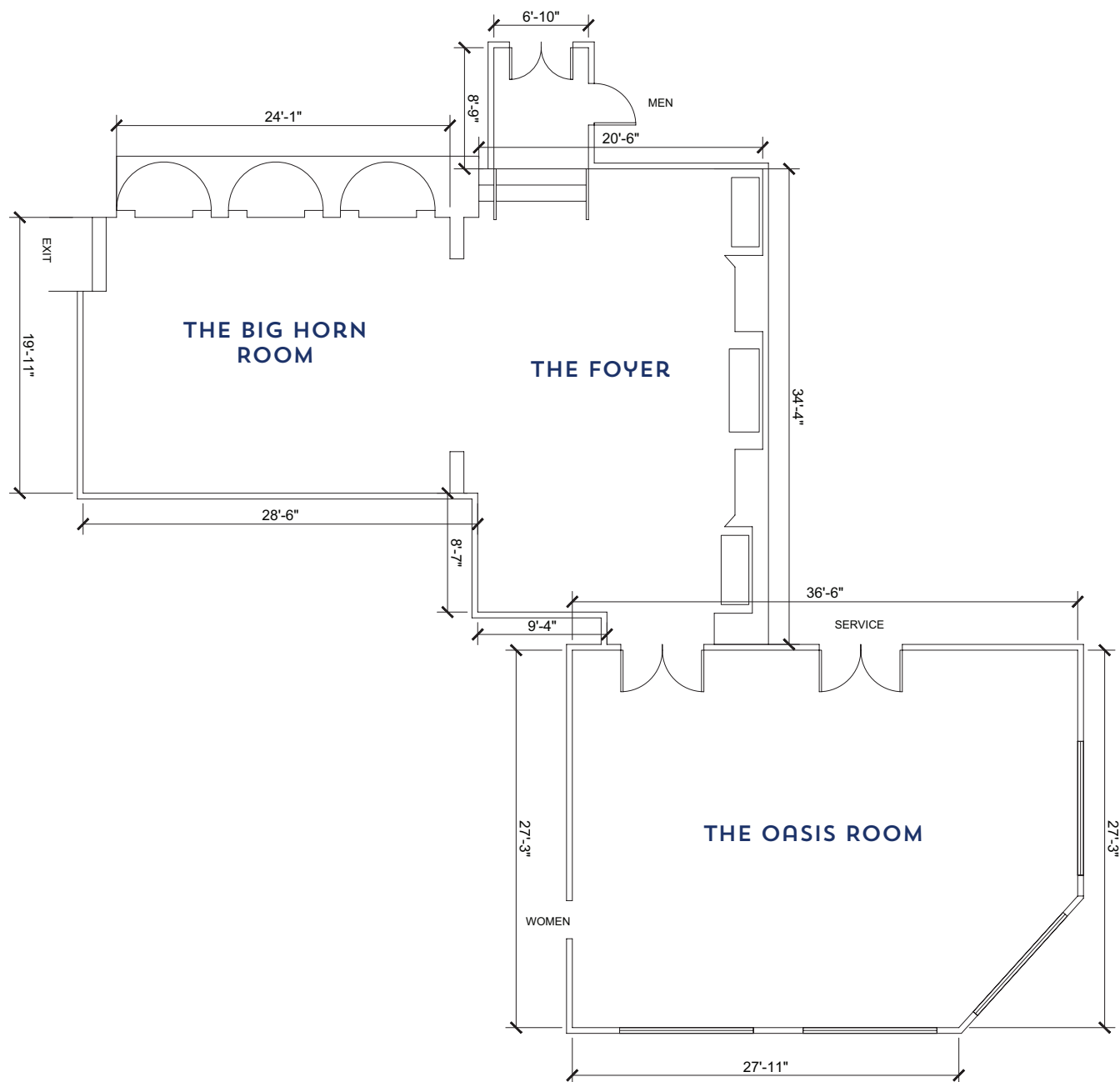
The Bighorn Room



The Foyer



EVENT VENUES AT THE INN - THE OASIS ROOM COMPLEX



SPECIFICATIONS:

VENUE	SQ. FEET	CAPACITY							
		DIMENSIONS	CLASSROOM	BOARDROOM	SQUARE	U-SHAPE	ROUNDS	THEATER	RECEPTION
The Oasis Complex	2,179	—	—	—	—	—	—	—	—
The Oasis Room	995	36'-6"x 27'-3"*	21	34	28	23	81	105	110
The Bighorn Room	480	19' x 24'-1"	36	16	13	15	42	50	50
The Foyer	704	20'-6" x 34'-4"	n/a	n/a	n/a	n/a	n/a	n/a	70

*Please note south wall is 27'-1", as the room is not a true rectangle.

CONTACT INFORMATION

760-786-3354

THE WEDDING OF YOUR DREAMS VENUES – GOLD RUSH ROOM

THE GOLD RUSH ROOM

The rectangle-shaped room with large picture and bay window boasts a stunning view of the pool and Panamint Mountains beyond. It features two fireplaces, locally – sourced stone walls, a large King’s table and heavy wood accents (including the mantle pieces that are repurposed railroad ties). There is family-style seating for 28 and is located near the Oasis Gardens.

CONTACT INFORMATION

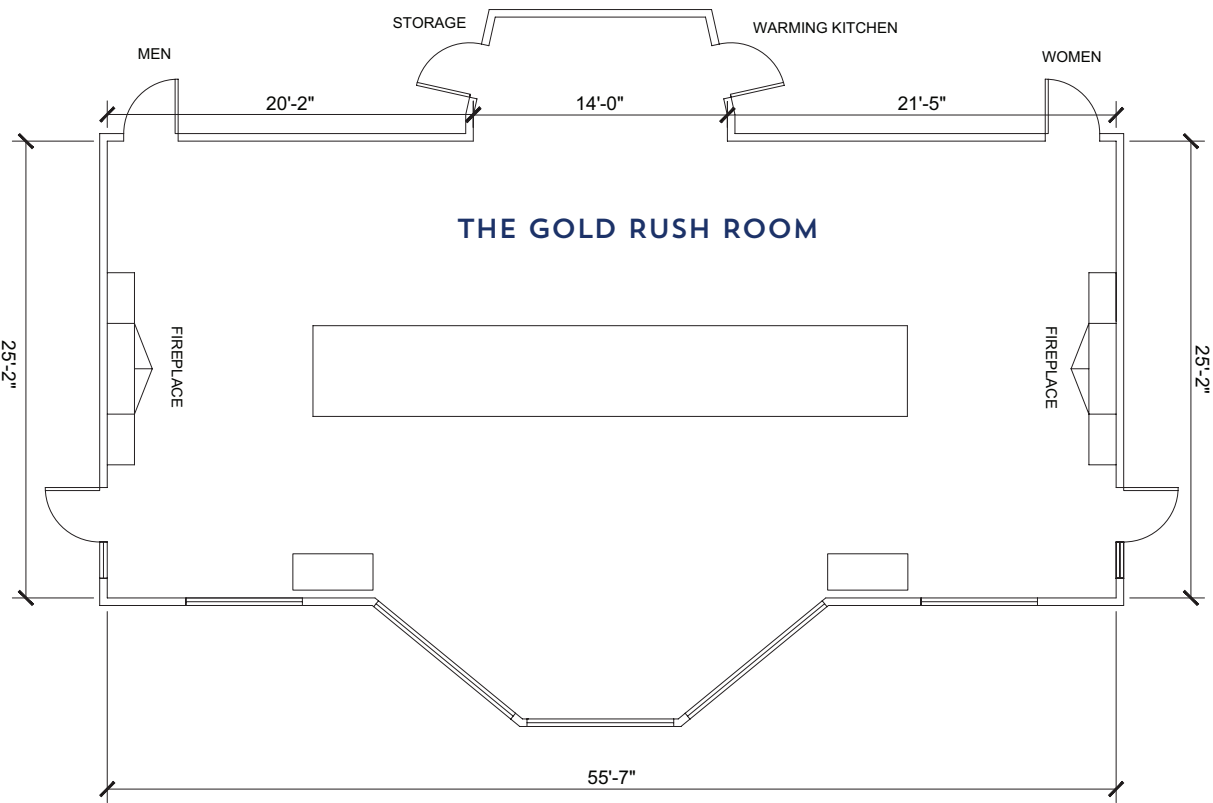
760-786-3354



SPECIFICATIONS:

VENUE	SQ. FEET	CAPACITY							
		DIMENSIONS	CLASSROOM	BOARDROOM	SQUARE	U-SHAPE	ROUNDS	THEATER	RECEPTION
The Gold Rush Room	1,400	25'-2" x 55'-7" **	n/a	28	n/a	n/a	n/a	n/a	100

** alcoves are approximately 14' deep



EVENT VENUES AT THE INN – THE PANAMINT DECK

THE PANAMINT DECK

Located one level above the Gold Rush Room, this outdoor venue features views of the Panamint Mountains and spectacular sunsets. An excellent place for a cocktail reception and secluded due to its location, the Panamint Deck offers privacy in a stunning locale with amazing views.

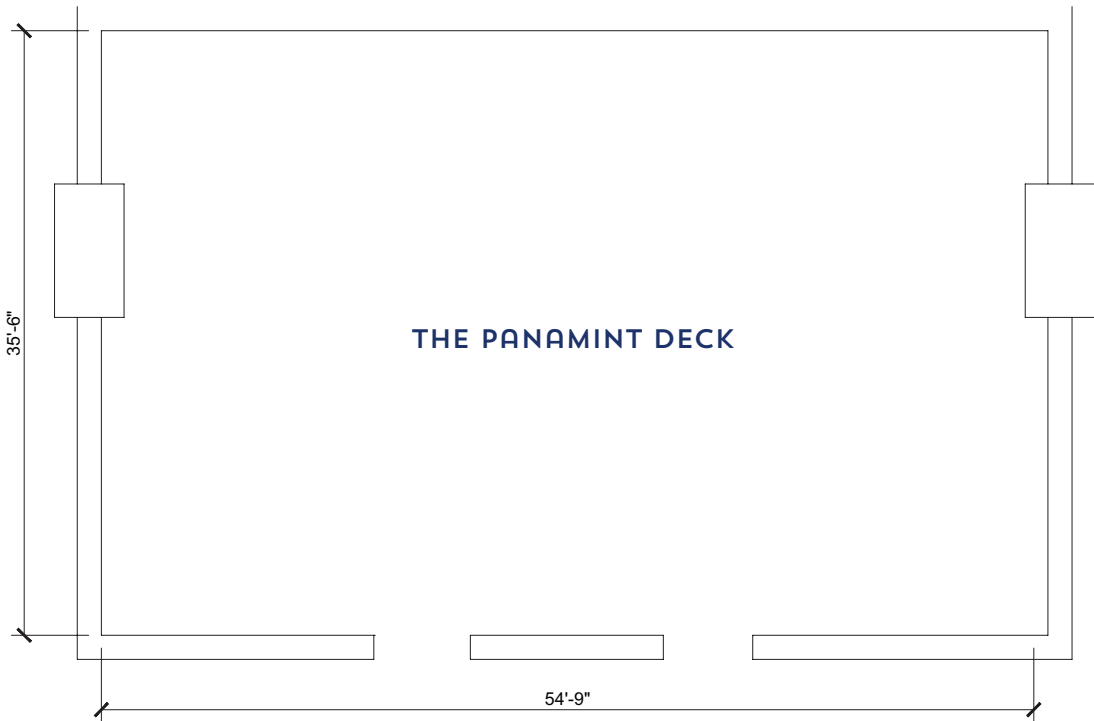
CONTACT INFORMATION

760-786-3354



SPECIFICATIONS:

VENUE	SQ. FEET	CAPACITY							
		DIMENSIONS	CLASSROOM	BOARDROOM	SQUARE	U-SHAPE	ROUNDS	THEATER	RECEPTION
The Panamint Deck	1,944	35'-6" x 54'-9"	n/a	n/a	n/a	n/a	75	n/a	100



STARGAZER’S TERRACE

The Stargazer’s Terrace features a 270-degree view of the Oasis Gardens and the desert beyond. Ideal for sunsets and taking in Death Valley’s internationally famous night skies, this locale is the perfect spot for smaller, more intimate gatherings.

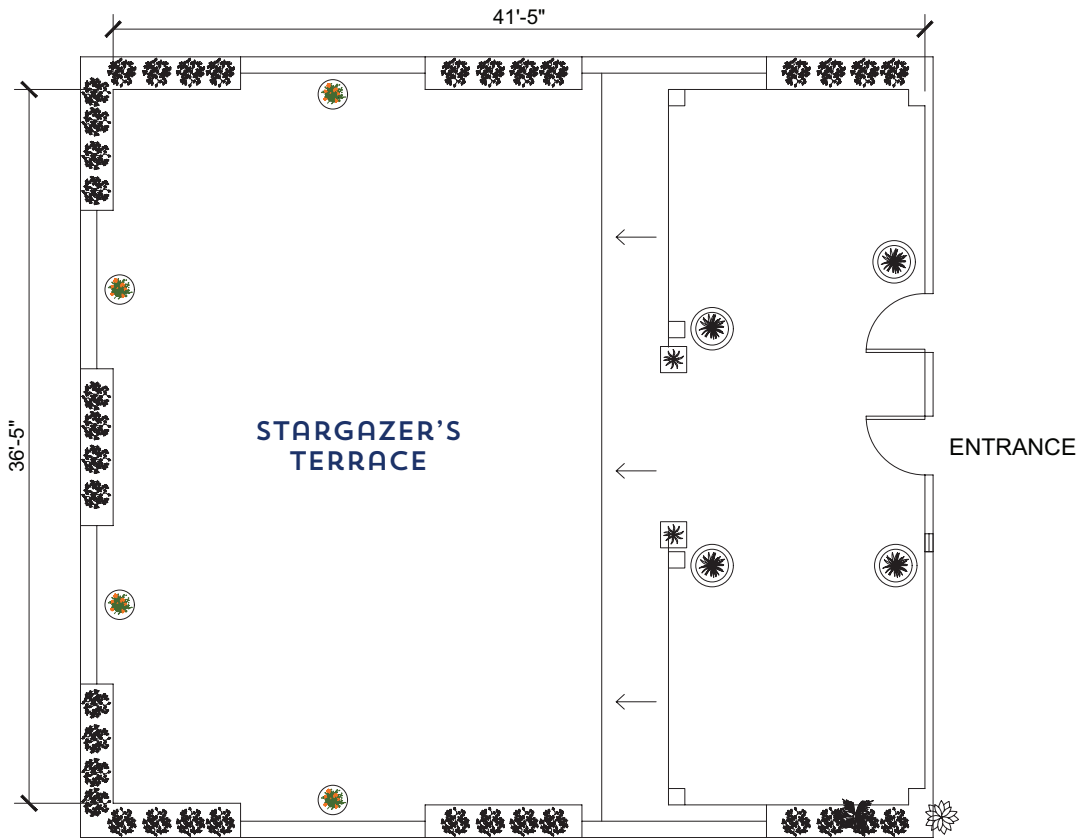
CONTACT INFORMATION

760-786-3354



SPECIFICATIONS:

VENUE	SQ. FEET	CAPACITY							
		DIMENSIONS	CLASSROOM	BOARDROOM	SQUARE	U-SHAPE	ROUNDS	THEATER	RECEPTION
Stargazer's Terrace	1,467	36'-5" x 41'-5"	n/a	n/a	n/a	n/a	50	70	50



THE WEDDING OF YOUR DREAMS VENUES - THE MISSION GARDENS

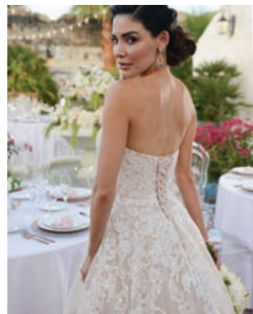


THE MISSION GARDENS

The Oasis at Death Valley is proud to introduce a new way to say “I do” with the Mission Gardens. Open to the desert skies and nestled at the foot of the mountains, this new ceremony venue evokes the elegance of a Spanish Mission courtyard and the enchantment of a secret garden. With adobe walls, blooming bougainvillea, towering palm trees, and actual 1920s ruins, this charming open-air location will provide an exquisite and unique experience to share your love with your family and friends.

CONTACT INFORMATION

760-786-3354

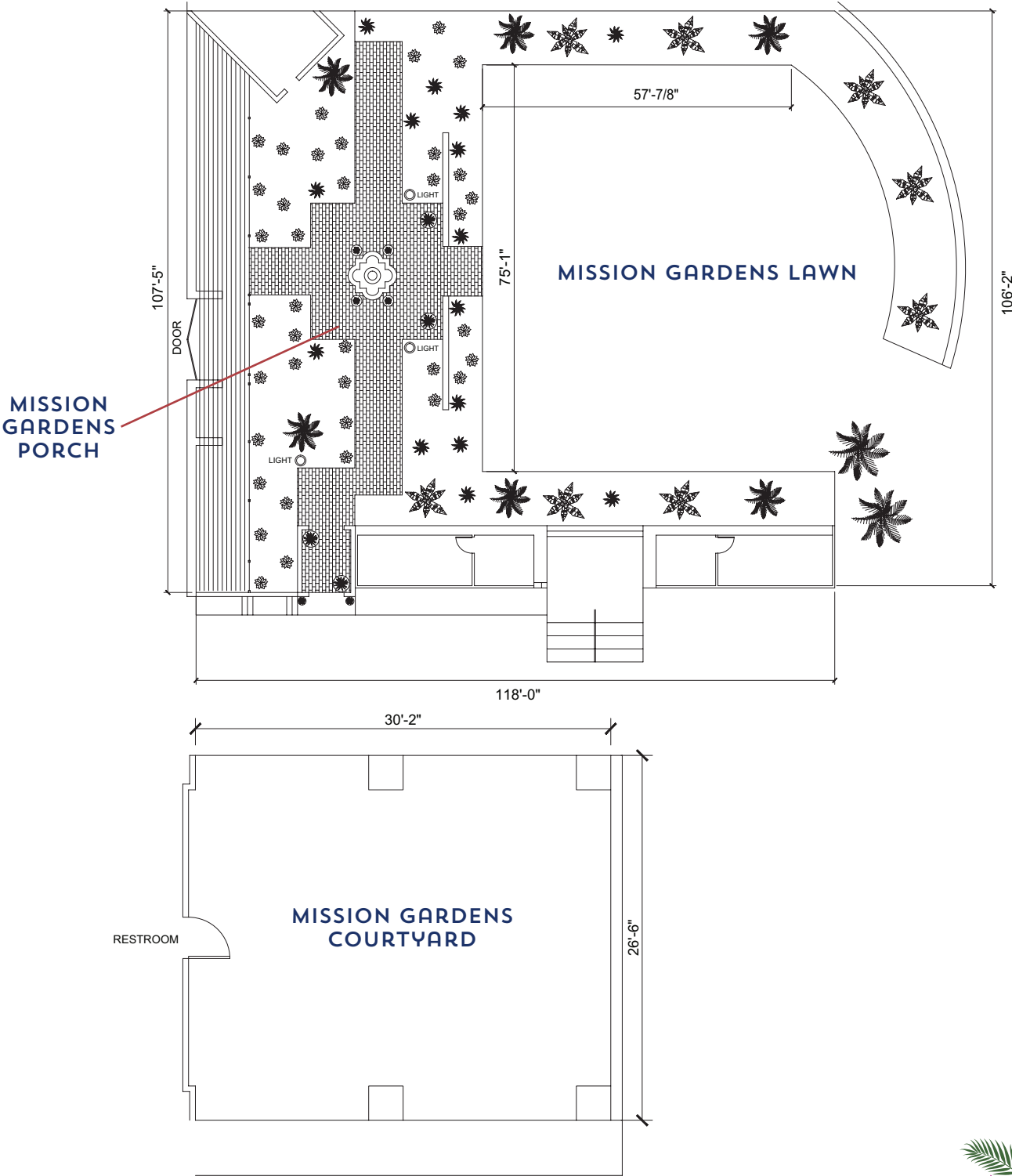


THE MISSION
GARDENS
AT DEATH VALLEY

EVENT VENUES AT THE INN - THE MISSION GARDENS

SPECIFICATIONS:

VENUE	SQ. FEET	CAPACITY							
		DIMENSIONS	CLASSROOM	BOARDROOM	SQUARE	U-SHAPE	ROUNDS	THEATER	RECEPTION
Mission Gardens (Full Space)	12,675	107'-5" x 118'	n/a	n/a	n/a	n/a	300	n/a	500
Mission Gardens (Lawn)	4,286	75'-1" x 57'-1"	n/a	n/a	n/a	n/a	270	n/a	460



THE WEDDING OF YOUR DREAMS VENUES – THE CASITA LAWN



SPECIFICATIONS:

VENUE	SQ. FEET	CAPACITY							
		DIMENSIONS	CLASSROOM	BOARDROOM	SQUARE	U-SHAPE	ROUNDS	THEATER	RECEPTION
Casita Lawn	4,000	–	n/a	n/a	n/a	n/a	600	n/a	900

CASITA LAWN

An expansive green lawn nestled between the edge of the Oasis Gardens and the Casita buildings, the Casita Lawn is a wide-open green space just steps away from the Inn’s spring-fed pool. Ideal for stargazing, a quick stroll, or simply relaxing with the beverage of your choice. It can also be used as a small wedding venue for in an intimate and lush setting. Really make the space your own by buying out the casitas that ring the lawn for you and your guests for your special day.

CONTACT INFORMATION

760-786-3354



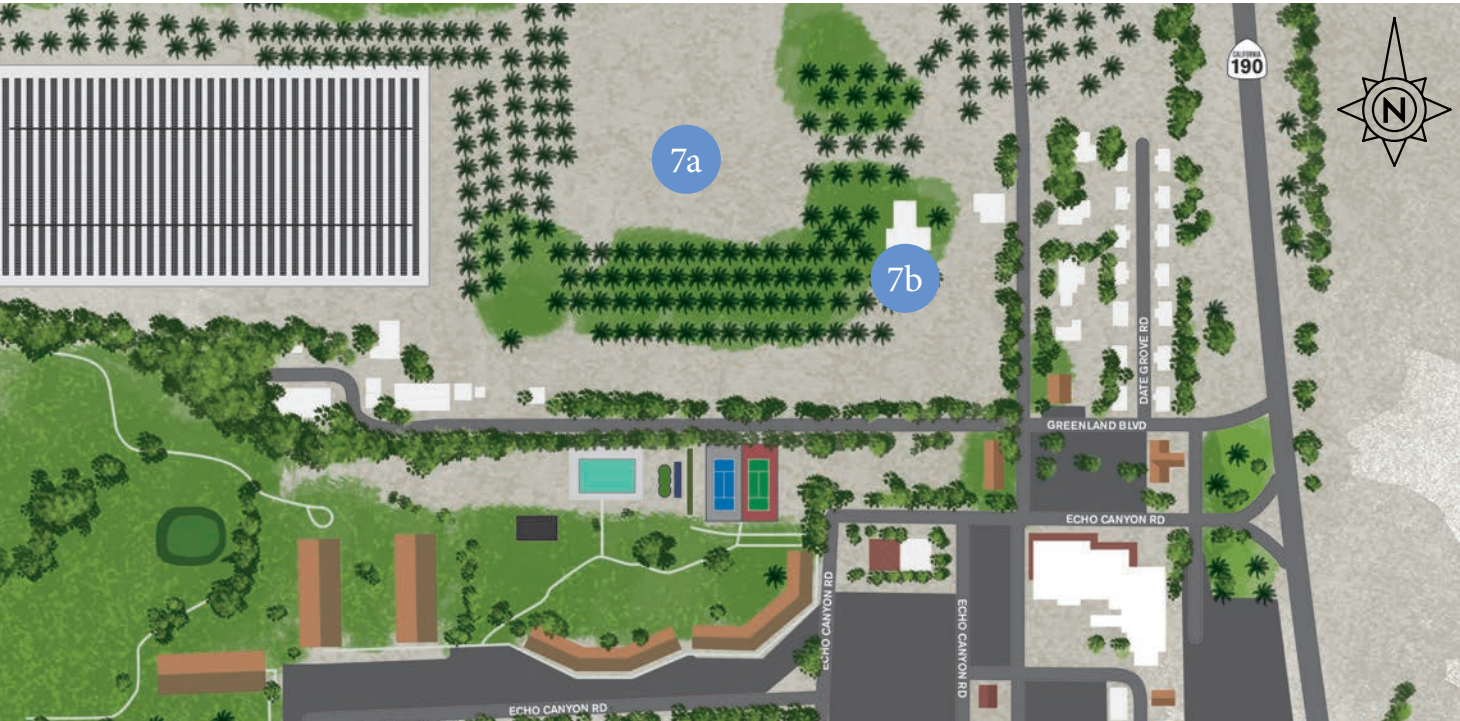
THE WEDDING OF YOUR DREAMS VENUES - THE RANCH



MAP KEY

7a. Date Grove

7b. Date Grove Venue



CONTACT INFORMATION

760-786-3354

oasisatdeathvalley.com

D11



THE WEDDING OF YOUR DREAMS VENUES - DATE GROVE VENUE

WILDROSE HALL

This unique space overlooking Wildrose Hall and The Furnace Creek Golf Course at Death Valley offers lots of natural light and great views of the Panamint Mountains and star-filled night skies.

Boasting a casual atmosphere for meet-and-greets, rehearsal dinners, and receptions, there is family-style seating for 100 people, a covered deck, and a barbecue menu is available.

In addition to the laid-back atmosphere inside the venue, the Date Grove has activities to keep guests young and old entertained with horseshoes, fire pits, and assorted other picnic games.

CONTACT INFORMATION

760-786-3354



SPECIFICATIONS:

VENUE	SQ. FEET	CAPACITY							
		DIMENSIONS	CLASSROOM	BOARDROOM	SQUARE	U-SHAPE	ROUNDS	THEATER	RECEPTION
Wildrose Hall	4,000	49' x 82'	180	65	80	65	180	275	350



THE WEDDING OF YOUR DREAMS

